



M6A Polyclonal Antibody

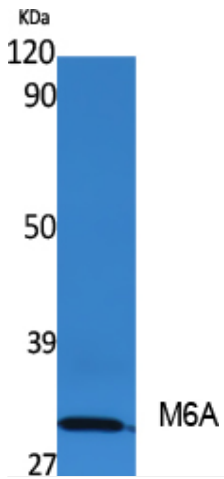
Catalog No	YP-Ab-12848
Isotype	IgG
Reactivity	Human;Mouse;Rat
Applications	WB;ELISA
Gene Name	GPM6A
Protein Name	Neuronal membrane glycoprotein M6-a
Immunogen	Synthesized peptide derived from M6A . at AA range: 140-220
Specificity	M6A Polyclonal Antibody detects endogenous levels of M6A protein.
Formulation	Liquid in PBS containing 50% glycerol, 0.5% BSA and 0.02% sodium azide.
Source	Polyclonal, Rabbit,IgG
Purification	The antibody was affinity-purified from rabbit antiserum by affinity-chromatography using epitope-specific immunogen.
Dilution	Western Blot: 1/500 - 1/2000. ELISA: 1/5000. Not yet tested in other applications.
Concentration	1 mg/ml
Purity	≥90%
Storage Stability	-20°C/1 year
Synonyms	GPM6A; M6A; Neuronal membrane glycoprotein M6-a; M6a
Observed Band	31kD
Cell Pathway	Cell membrane ; Multi-pass membrane protein . Cell projection, axon . Cell projection, growth cone . Cell projection, dendritic spine . Cell projection, filopodium . Cell projection, neuron projection . Localizes to cholesterol-rich lipid rafts of the plasma membrane of hippocampal neurons. Localized to plasma membrane of cell bodies and neurites of hippocampal neurons. Localized in membrane protrusions (filopodia and spines) of primary hippocampal neurons (By similarity). Localized to the growth cone edge membrane of elongating axons (By similarity). .
Tissue Specificity	Brain,Brain cortex,Fetal brain,Spinal cord,
Function	similarity:Belongs to the myelin proteolipid protein family.,
Background	similarity:Belongs to the myelin proteolipid protein family.,
matters needing attention	Avoid repeated freezing and thawing!



Usage suggestions

This product can be used in immunological reaction related experiments. For more information, please consult technical personnel.

Products Images



Western Blot analysis of extracts from rat stomach, using M6A Polyclonal Antibody. Secondary antibody(catalog#:RS0002) was diluted at 1:20000